

SMD Power Inductor

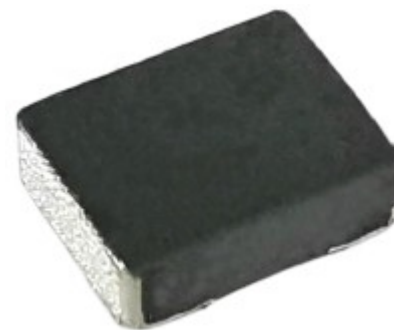
MCDMCF322512/DS



新しい注目の製品

特性

- Metal composite core material for higher energy density
- Magnetically shielded, low EMI
- High current, low core loss
- Suitable for large current
- L × W × H: 3.4 × 2.7 × 1.2mm Max.
- Product weight: 0.06g (ref.)
- Moisture Sensitivity Level: 1



環境データ

- Storage temperature range: -55°C ~ +165°C
- Operation Temperature range: -55°C ~ +165°C (including coil's temperature rise)

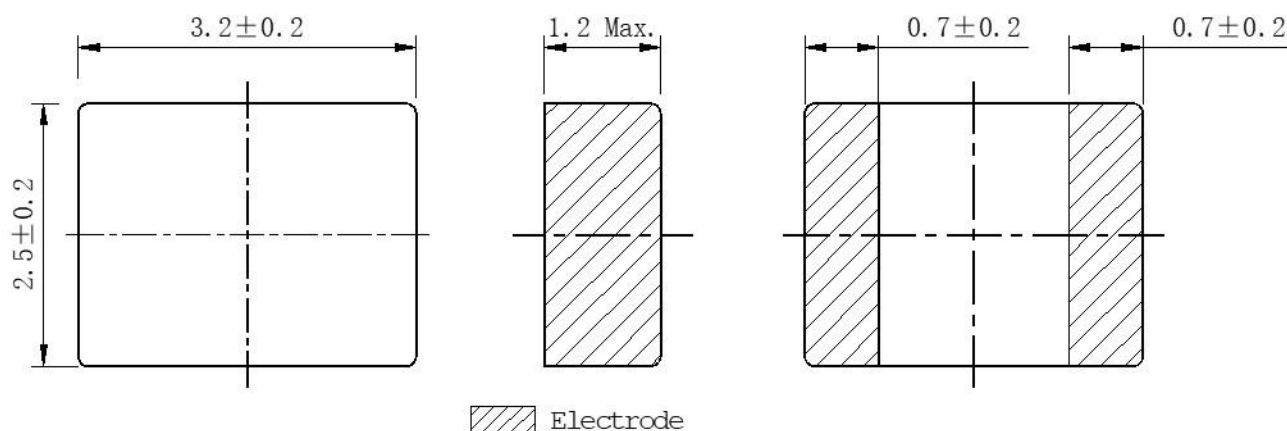
梱包

- 3000pcs/reel

用途

- Voltage Regulator Module (VRM)
- Low profile, high current power supplies
- DC/DC converter for CPU in Notebook PC
- Cellular phones, LCD displays, HDDs, DVCs, DSCs, PDAs, etc.
- Thin type on-board power supply module for exchanger

外形寸法 - [mm]



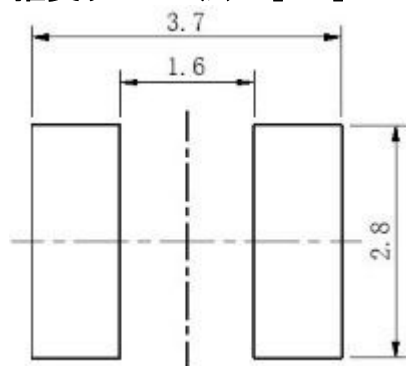
SMD Power Inductor

MCDMCF322512/DS

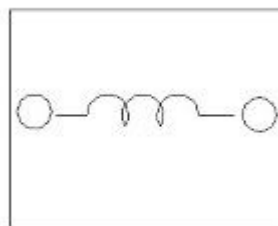


新しい注目の製品

推奨ランド寸法 - [mm]



結線図





電気的特性

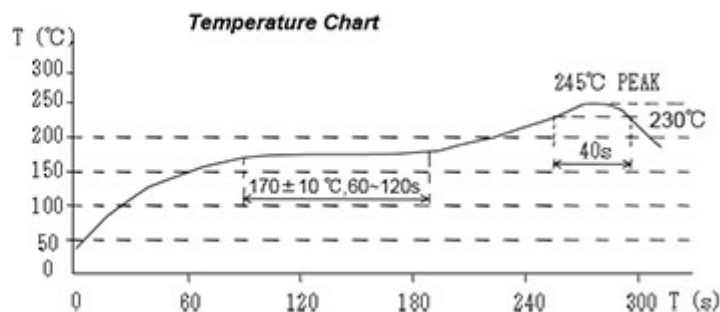
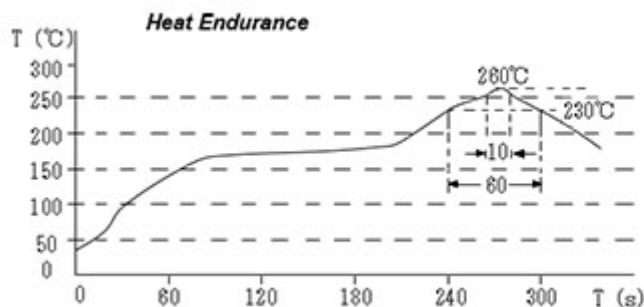
品名	インダクタンス範囲 (μ H) ※1	D.C.R. (m Ω) 20°C Max.(Typ.)	直流重畳電流 (A) Max.(Typ.) ※2	温度上昇電流 (A) Max.(Typ.) ※3
MCDMCF322512DS-R47MC	0.47 \pm 20%	19.50 (16.00)	7.60 (9.00)	(7.20)
MCDMCF322512DS-1R0MC	1.00 \pm 20%	36.00 (30.00)	5.10 (6.00)	(5.00)
MCDMCF322512DS-4R7MC	4.70 \pm 20%	180 (150)	2.40 (2.80)	(1.90)

※1 Measuring frequency Inductance at 1MHz, 0.1V.

※2 Saturation current: The value of DC current when the inductance is over 70% of the initial value.

※3 Temperature rise current: The actual value of DC current when the coil temperature rise is $\Delta T=40^\circ\text{C}$.

はんだリフロー条件



SMD Power Inductor

MCDMCF322512/DS



新しい注目の製品

直流重畳電流・温度上昇電流グラフ

— L (20°C)

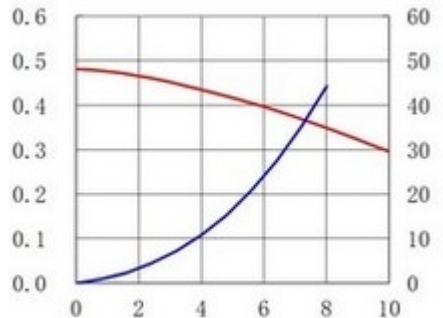
— ΔT

1. MCDMCF322512DS-R47MC

2. MCDMCF322512DS-1R0MC

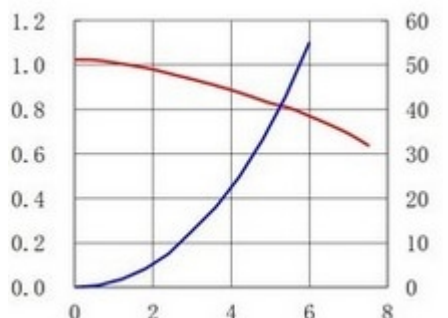
3. MCDMCF322512DS-4R7MC

L (μH) ΔT (°C)



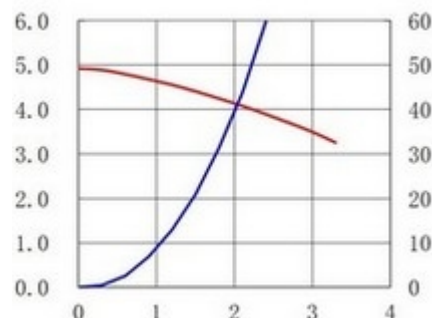
DC(A)

L (μH) ΔT (°C)



DC(A)

L (μH) ΔT (°C)



DC(A)



営業所情報のために、当社のウェブサイトを訪問する [ここをクリック](#) してください。